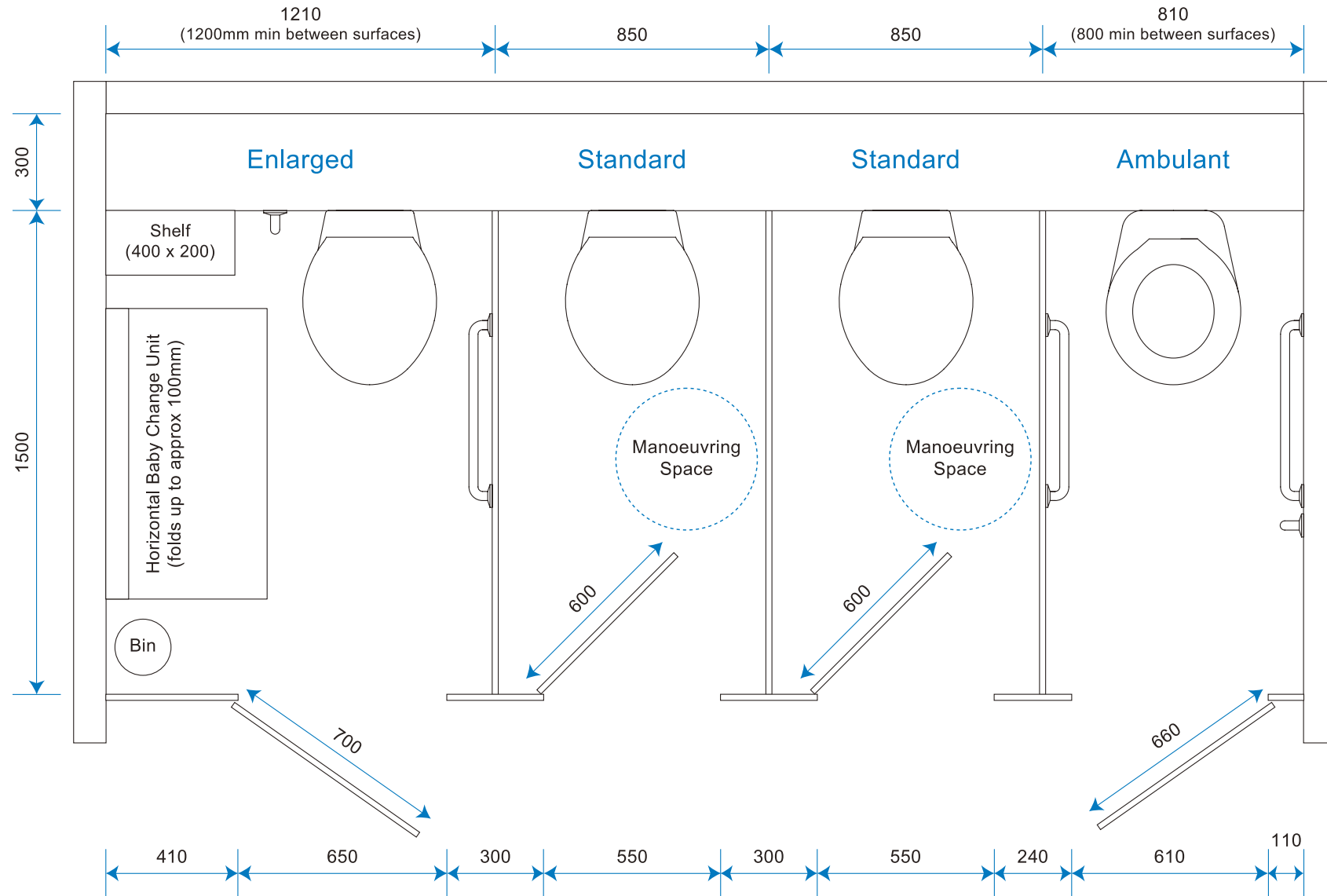


# Toilet Cubicle Sizes - (Universal Access Guidelines)



# Toilet Cubicle Sizes - Explained



## Enlarged WC Cubicles:

Where there are 4 or more cubicles in a washroom, one of these must be an enlarged cubicle.

Enlarged cubicles must be a minimum width of 1200mm and include an outward opening door.

A horizontal and vertical grab rail set is required around the WC.



## Standard Toilet Cubicles:

All standard cubicles must now have a minimum of 450mm diameter manoeuvring space within the cubicle.

Indicator-bolts must be capable of being operated with a closed fist (single action) - and doors must allow for emergency access should the user collapse and become trapped in the cubicle.



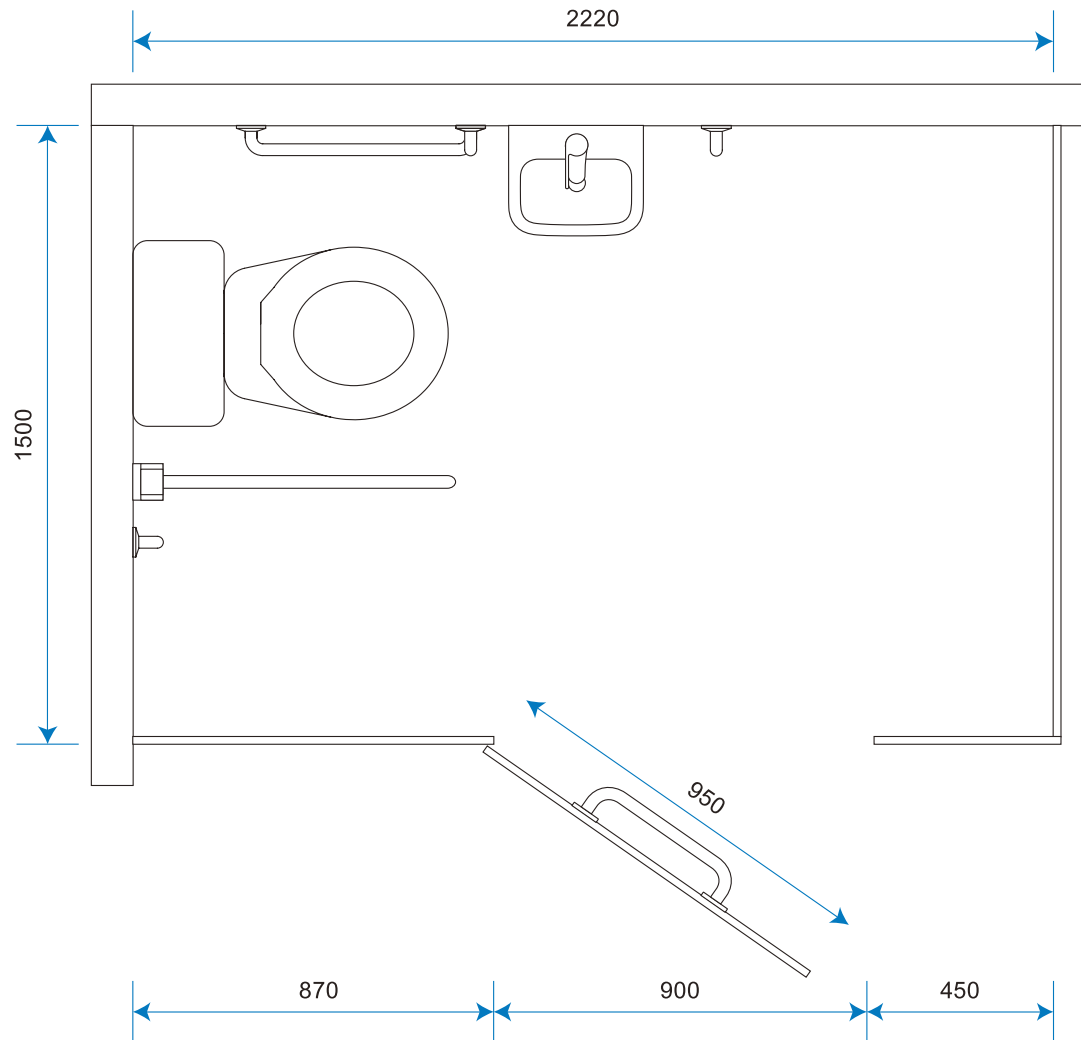
## Ambulant Disabled Cubicles:

Every same-sex washroom must have at least one wc cubicle that is suitable for the ambulant disabled.

If there is only one cubicle in the washroom this must be suitable for an ambulant disabled person.

The ambulant disabled cubicle must include an outward opening door.

# Toilet Cubicle Sizes - Wheelchair Accessible Cubicles

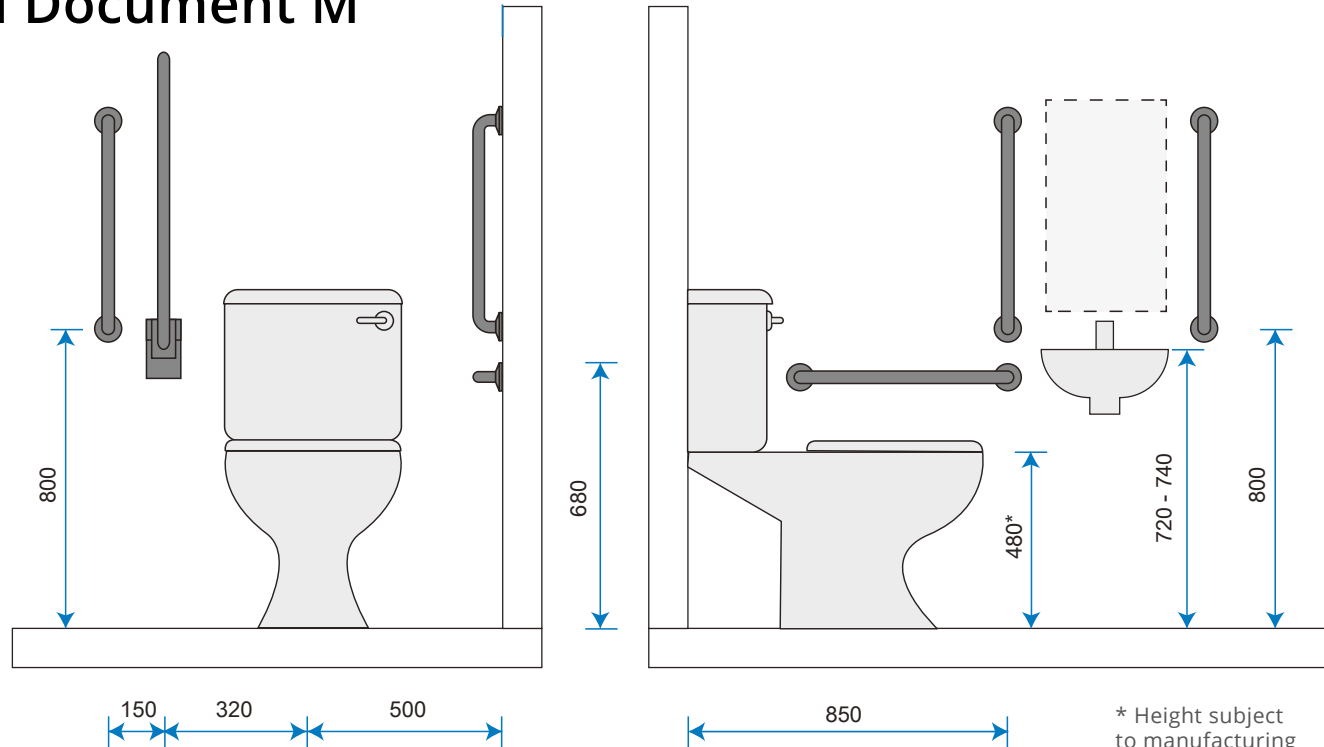


## Wheelchair Accessible Cubicles:

The wheelchair accessible layout has been modified to accommodate an overall toilet cubicle length of 2220mm (previously 2000mm).

The door opening needs to be 900mm with a 950mm (wide) outward opening door.

# Approved Document M



## Wheelchair Accessible Toilet:

The diagram shows the heights and arrangement of grab rails and sanitary ware as recommended in The Building Regulations 2010 - Approved Document M.

Doc-M Packs are available to purchase online from:

**plumbware.co.uk**

