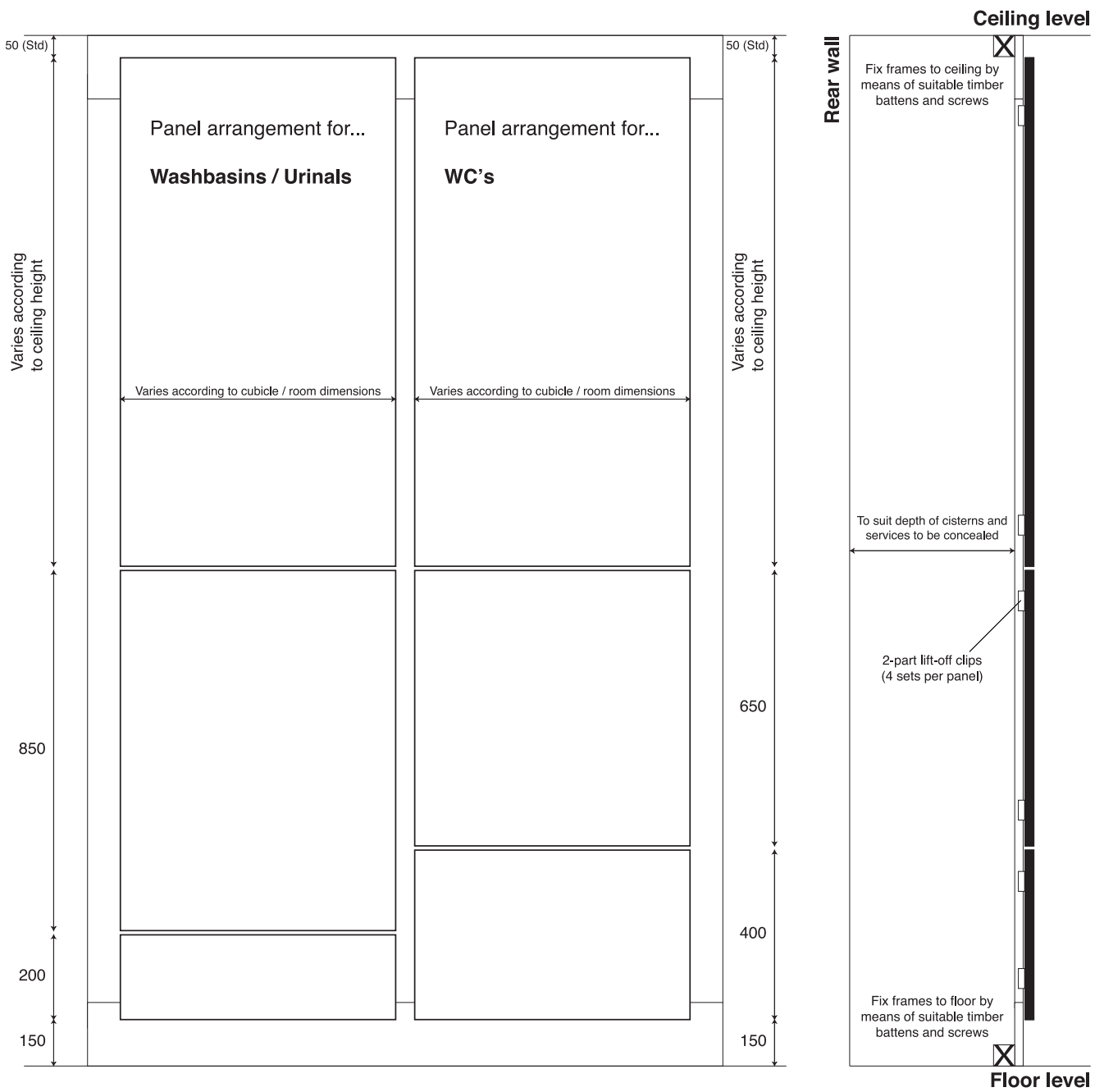


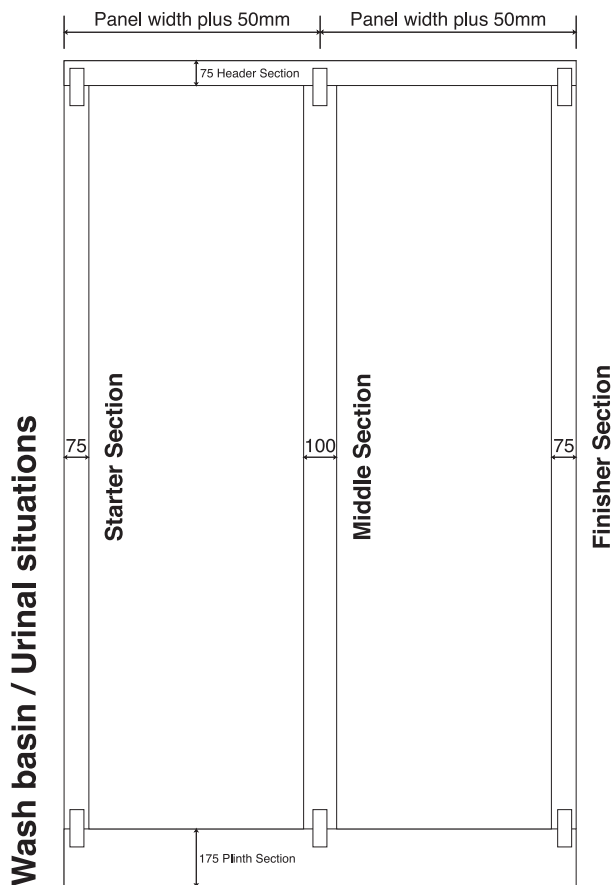
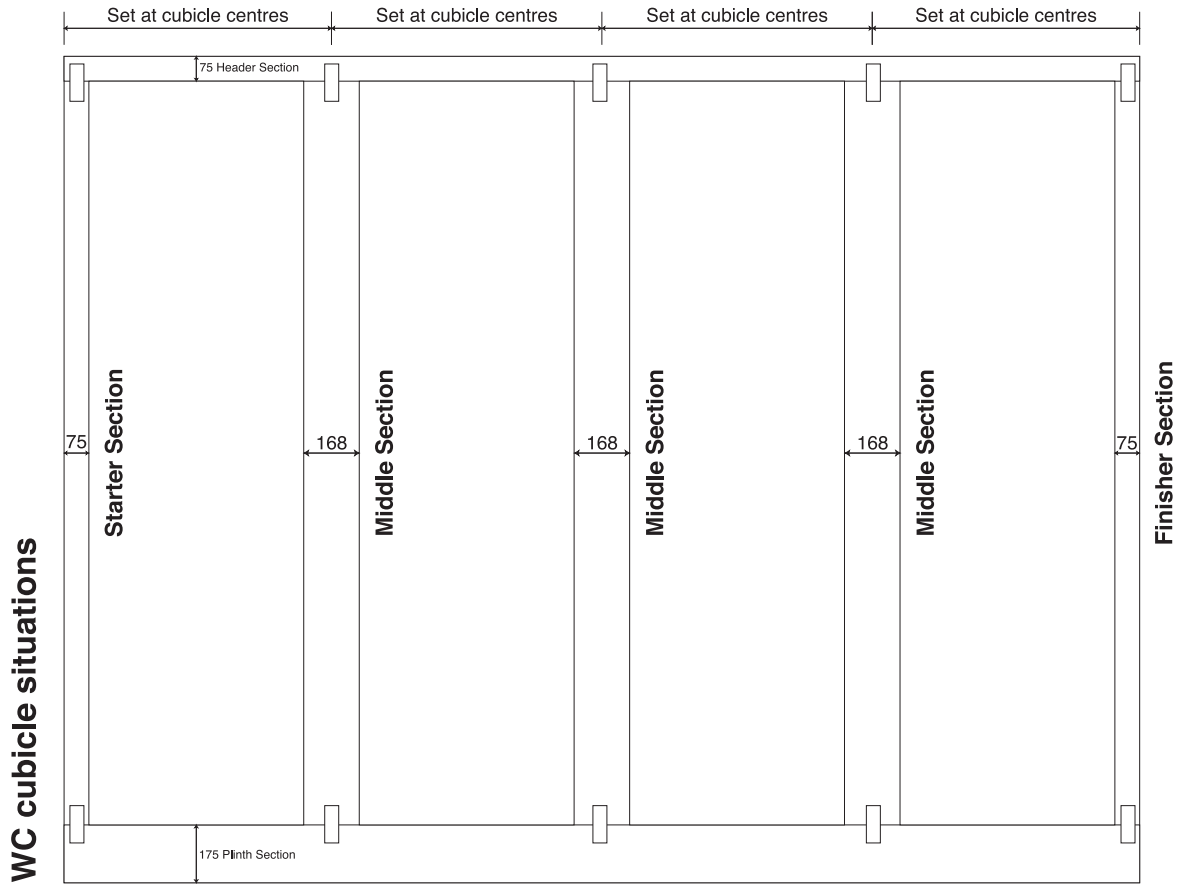
# Standard Duct Panel Arrangements



Helpline (01924) 457600  
[www.washroomcubicles.co.uk](http://www.washroomcubicles.co.uk)



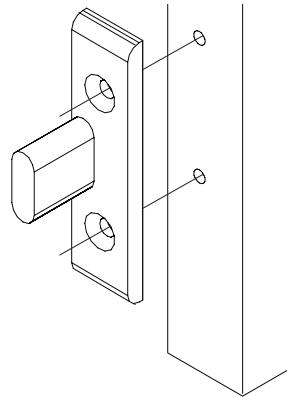
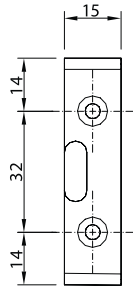
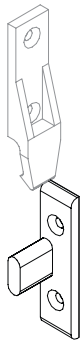
# Standard Duct Panel Frames



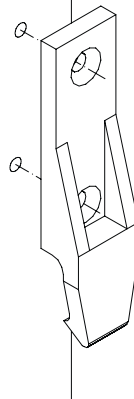
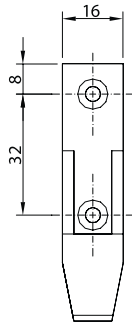
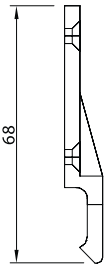
Detail showing reverse of flash-gap frame. Constructed of lengths of MFC (or laminated faced chipboard) all unlippped, and connected together by means of MDF cleats screwed over joints as shown.

If larger / additional frames are required, simply cleat additional lengths together.

# Panel Fitting Components

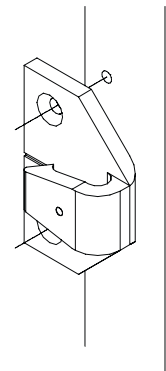
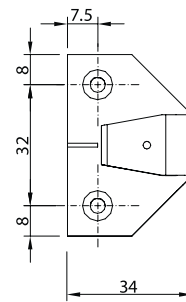
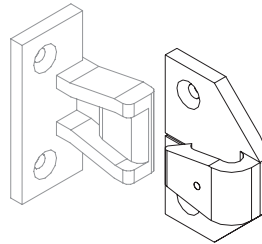


**Suspension Fitting**  
Frame Component



**Suspension Fitting**  
Panel Component

**Push-In Fitting**  
Frame Component



**Push-In Fitting**  
Panel Component

