

washroom review



A Proud History

3 generations of manufacturing

How it's made:

Take a close look at our manufacturing process

Be inspired:

We take a look at Calder Joinery

Colourful creations:

Discover what Tidy Teach is all about



CALDER | JOINERY

plumbware.co.uk





The importance of heritage

In this edition of Washroom review we are going to take a look at an overview of the Cubicle Centre and the brands that have been launched over the years since it all first started more than 20 years ago.

I have spent most of my time in Digital Design & Marketing and I joined Cubicle Centre over a month ago. I was amazed at the scope of how the company had grown over the years along with the wide range of products they manufacture.

Since starting here I've spent my time learning about the company, focusing on each area of the company's brands and refining our digital/social communications.

I truly believe that the contributions from the family members ensures the continued success of the Company. Their experience along with support from all members of the Cubicle Centre team will see this growth carry on into the future.



Model of Jennings's patent water closet, c 1900.

Flushed Facts

The flushing toilet was invented by John Harington in 1596. Joseph Bramah of Yorkshire patented the first practical water closet in England in 1778. George Jennings in 1852 also took out a patent for the flush-out toilet.

Flush toilets were also known as "water closets", as opposed to the earth closets.

WCs first appeared in Britain in the 1880s, and soon spread to Continental Europe.

In America, the chain-pull indoor toilet was introduced in the homes of the wealthy and in hotels in the 1890s.

How It's Made - Your Cubicle

1

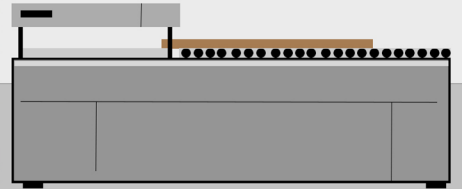
What happens when you place your order for cubicles with us?

We start by drawing, quantifying and optimising your requirements before adding the raw materials to our scheduled incoming deliveries.



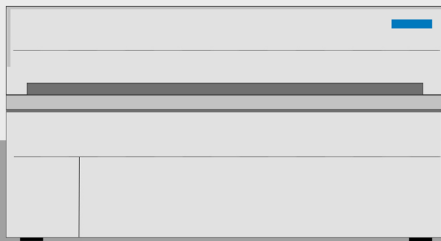
2

The unprocessed sheets are cut into your panel sizes on one of our three digital saws.



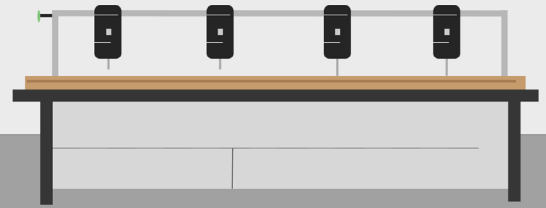
Each panel has an appropriate edging detail applied, finishing the panel off neatly.

3



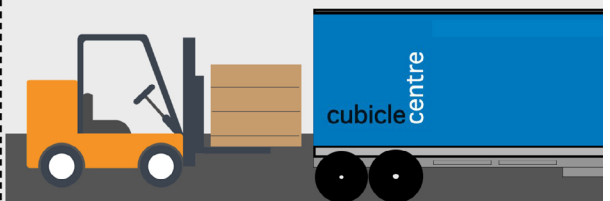
4

Standard drilling for hinges, latches, legs etc are done on our custom drill press.



5

Your hardware is then picked from our stock and packaged onto a pallet with your panels.



Did You Know ?

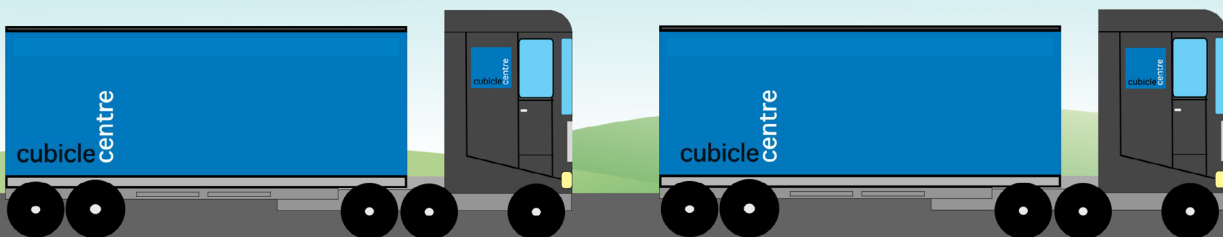
We use 4 different types of board in our product range

- HPL - High Pressure Laminate
- CGL - Compact Grade Laminate
- MFC - Melamine Faced Chipboard
- CDF - Compact Density Fibre Board



6

Your order is placed onto our trucks and is ready to be delivered nationwide.



CELEBRATING 20 YEARS



20 years of Cubicle Centre history

With three generations of joinery and manufacturing experience Cubicle Centre has become a strong and trusted name within the construction industry.



Small beginnings

The company started with three members of staff; Andrew, his father David and Clive Hannan who remain with the company today.

It all began in 1998 with a tabletop edge banding machine and portable, electric circular saw in stark comparison with the digital machinery of today.



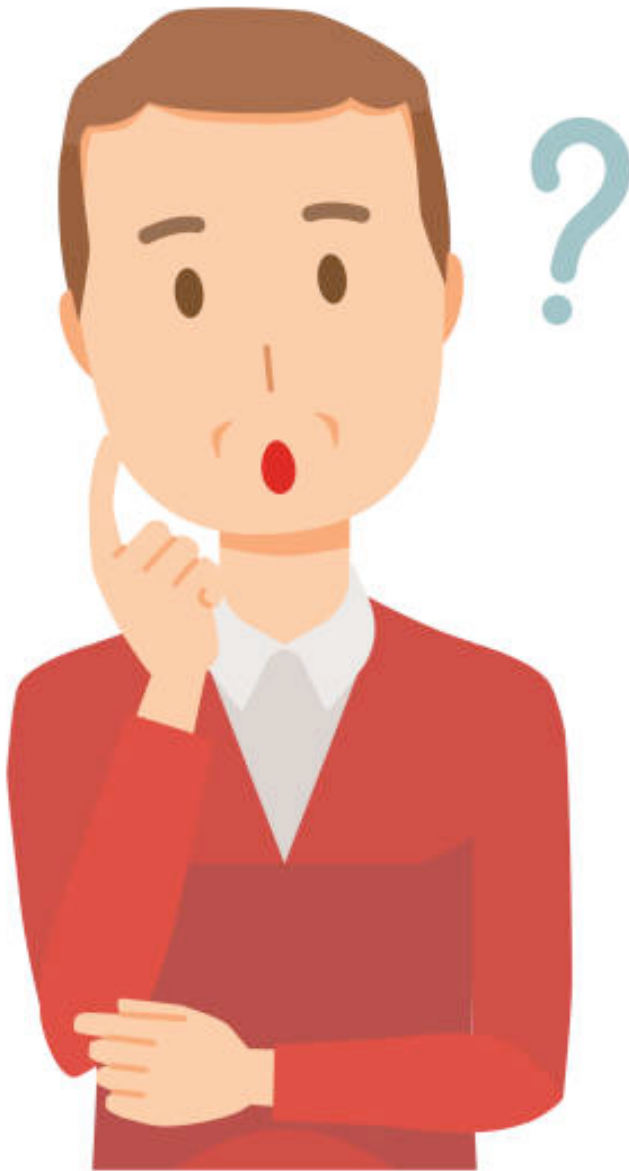
Present day

Fast forward 20 years. Cubicle Centre has a proud history.

The company employs around 50 people from local areas. It has also supported many local organisations. Since those small beginnings it has launched various other brands, and now produces school furniture, specialist joinery products, commercial plumbing supplies and, more recently, fire doors.

Cubicle Centre embraces new manufacturing technologies, whilst still remaining true to its core family values. It has been an interesting journey to the present day. They have supplied and delivered cubicles across the UK to lots of different clients. These include holiday parks, schools, pubs and nightclubs, the list goes on.





Did You Know?

We have supplied:

The National Trust

Fitness Centre Brands

The Olympic Village

Buckingham Palace

HMS Belfast

MOD Falklands Islands

The British Embassy In
Baghdad



Cubicles & beyond

The next 20 years will be an interesting time as Andrew Thorpe and his son Rob look towards the future.

Extending their reach beyond the UK and into the rest of Europe as a market leader.

For more information:

www.washroomcubicles.co.uk

sales@washroomcubicles.co.uk

01924 457600

Lets Be Inspired

CALDER | JOINERY

Present within the Cubicle Centre family there is a hidden gem in the heart of Yorkshire. Calder Joinery joined the family over 2 years ago.

They have produced and manufactured an array of designs and builds for a variety of clients.

A proud history

With over 35 years combined experience in creating high quality designs and products their team have the knowledge.

From the first initial draft, through to manufacturing and to the final end product.

Creativity at it's best

The company use only the highest grade timber combined with striking designs which work hand in hand with each other.

This is the exceptional standard you would expect from the proud heritage that Calder Joinery have.



Why Calder Joinery?

Best quality and most cost effective product

On site machinery equipped with the latest technology to cut down on lead times

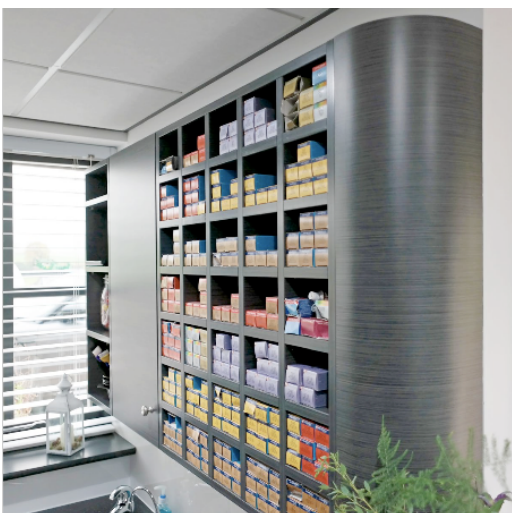
Skilled and dedicated workforce to effectively manufacture standard and bespoke projects



Embracing new technology

With ever increasing demand in the manufacturing industry Calder Joinery has invested in new technology to work alongside traditional craftsmanship of their products.

CNC technology enables Calder Joinery to produce a consistent batch of products for a variety of clients.



Built to last

Calder Joinery products are designed and built to last for many years.

This delivers durability and superior longevity.

Planning a project?

Get in touch with our friendly advisors.

For an informal chat call: 01924 457600 or visit their website : www.calderjoinery.co.uk

Colourful Creations



TIDY TEACH
CLASSROOM STORAGE UNITS

Unique

Tidy Teach is a new and exciting product which is part of the Cubicle Centre family.

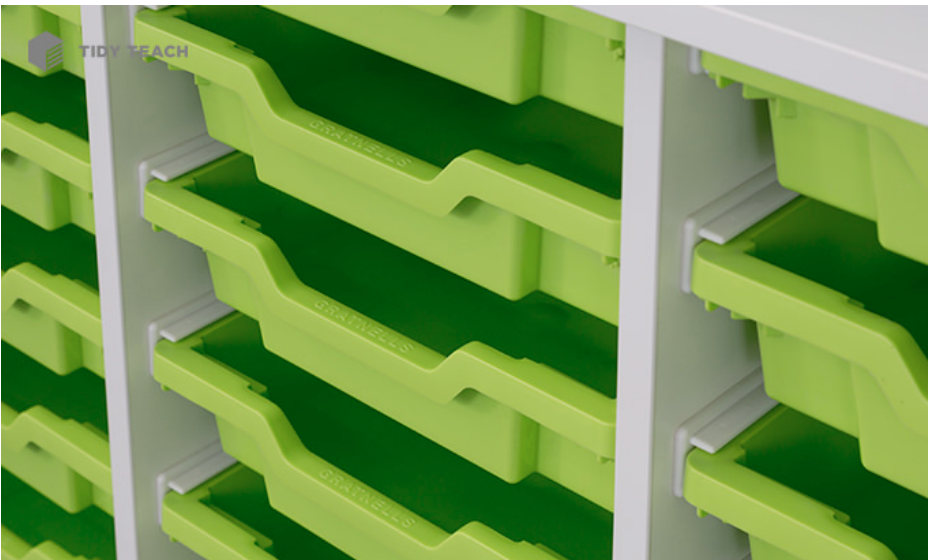
The company has discovered that the learning environment has a huge impact on the pupils, teachers and staff.

The company embarked on the development and research of their products and after months of stringent testing, the units were designed to look great whilst putting safety at the forefront of their product.

Tidy Teach had to make sure that all their units came with a 3 point checklist:-

Durable
Unique
Safe





Durability

As a company they built these units from the ground up. Tidy Teach products use better quality panels, stronger fixings and tougher wheels, than most of the leading competitors.

The company lead the way forward when it comes to safety in the classroom, ensuring that units are safe for adults and children alike.

Their range of units underwent rigorous testing to ensure that they all received the BS EN: 16121:2013 standard.

Safe

The taller units of all have hidden adjustable legs so that the units can be levelled and secured on that uneven classroom floor.

With Tidy Teach, they have used a palette of vibrant colours in their range, breaking away from the tradition of pale oak. The design of their units gives a modern and clean look to any classroom, and their products can be combined to create all types of wall configurations.

The Tidy Teach is as simple as ABC, you can choose how many you need and whatever colour combinations you need. It really is that easy.

**To enquire about their colourful creations:
www.tidyteach.co.uk or call: 01924 457600**





Going forward

Cubicle TV, is our latest venture here at Cubicle Centre. Over the next 12 months, we'll be looking to extend our digital video catalogue which will host: guides, installation videos and much more.

Also remember to subscribe to our channel as we'll be hosting unique content.

If you have a project that you have completed recently with our company using our products and wish to be involved then please get in touch for an informal chat, as we're always looking to showcase clients and our products on our Youtube channel, websites & social media.

We also have an exciting project on the channel which is in development, and we'll be sure to give you more details in our newsletters in coming months, so keep an eye out.

You can already follow us on social media platforms just click the logos below



01924 457600



marketing@washroomcubicles.co.uk

Featured products

For more products please visit our website www.plumbware.co.uk



A commercial shower panel in anodised aluminium, with a satin chrome finish, solid brass fixed shower head and scale-proof nozzle set at 6 lpm.

Features

Time flow ~30 seconds (+5/-10) with self-cleaning system
Spray angle can be adjusted and locked in place by the installer
Mixed water supply via top inlet
Supplied with non-return valve and filter
10 year warranty

Advantages

Vandal proof and durability
Water savings of 80% – compared with conventional shower (15 lpm)
User comfort with easy to operate soft-touch shower button
Perfect for commercial or domestic use.



This push-button tap (Temposoft 2) for wash basins has automatic, timed shut-off, and soft-touch operation.

Especially suited for installations for children, the elderly or disabled people.

Flow rate pre-set at 3 litres per minute (3 bar)
Time flow ~ 7 seconds
Tamp-proof and scale-proof flow straightener
10 year warranty



Trevi Panel offers a cost effective alternative to tiling a washroom. The panels are 9mm Moisture Resistant MDF which when sealed is perfect for wet locations and come in 3 types.

Quick to install, more hygienic and very little maintenance required once fitted. The panels are adjustable on site to suit your requirements. Available in black or white sparkle.

Included:

3x Shower Panel (Panels each measure 1200mm x 2400mm)
1x Satin Silver Internal Corner
1x Satin Silver H-Channel
4x Satin Silver End Channel
2x White Shower Seal Channel
3x Everbuild Clear Fix Adhesive
3x Everbuild Forever Clear Silicone

